

■ TCLMS-08-LED

■ LED Taxiway Centerline Light(8" 6mm)

Compliance with Standards

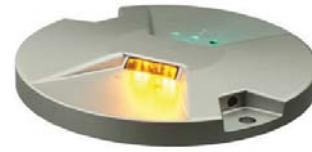
CAAC: AC-137-CA-2015-01 & 03
 SAC: GB/T 7256
 ICAO: Annex 14, Volume I
 IEC: TS 61827
 FAA: AC 150/5345-46; EB NO.67
 NATO: STANAG 3316

Application/Use

Taxiway centerline light

Features

- The LED light is featured by long working life, energy conversation, maintenance-free, which brings enormous economic benefits to customers
- Proprietary prism structural design and manufacturing process to ensure excellent optical performance
- Strict LED color management to ensure premium color consistency
- Light distribution consistent with that of halogen lights, complying with FAA standards
- Proprietary driver circuit and thermal management solution, which greatly improves the reliability and service life of light fixture
- Power factor above 0.9, which minimizes the power network disturbance
- Optional function of single lamp failure detection, which enables the light to simulate open circuit of halogen lamp when the LED light is damaged
- Specially-designed structure, protruding only 6.35mm above finish grade
- Upper cover with flat out-light surface to prevent from water buildup and ensure high luminous efficiency
- Upper cover with equal-strength design and forging craft, which has premium mechanical and barrier capacity, and shock resistance ability
- Smooth and sleek upper cover to prevent from damaging aircraft tires
- Lighting fixture made of highly conductive aluminum alloy, which ensures good heat dispersion
- Main structure made of corrosion-resistant aluminum alloy with special anodic oxidation treatment, all fasteners are made of stainless steel, suitable for harsh environment application
- High-precision parts and components machining to ensure all dimensional quality and precision
- IP68-grade, that can withstand inner pressure of up to 138kpa or water pressure generated from aircrafts' impact on the optical window
- Optional dual plugs that permits bilateral control of the two-way light and intelligent loop control
- Interchangeable, modular-designed components, applicable for all kinds of 8-inch LED in-pavement taxiway lights (6mm), which effectively runs down the inventories.



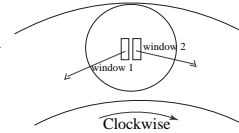
Order Information

TCLMS-08-X-LED-XX-XX-X

Type _____
 TCLMS-08=8-inch 6mm Taxiway centerline light (6.35mm protrusion above pavement)

Beam Direction _____

S = Straight section
 C = Curved section



Light Source _____

LED = LED lamp

Beam Color _____

GG = both windows are green
 YY = both windows are yellow
 GY = window 1 is green; window 2 is yellow
 YG = window 1 is yellow; window 2 is green
 YB = window 1 is yellow; window 2 is blank
 GB = window 1 is green; window 2 is blank
 BY = window 1 is blank; window 2 is yellow
 BG = window 1 is blank; window 2 is green

Plug _____

1P = One plug
 2P = Two plugs

Optional Function _____

M=single lamp fault detection function

* Please provide detailed installation info while ordering, spare parts and accessories should be separately ordered with specific order no.

Installation

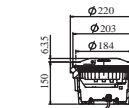


Fig 1. On 8'' shallow base

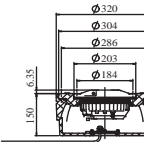


Fig 2. On 12'' shallow base w/ 12''/8'' adapter ring

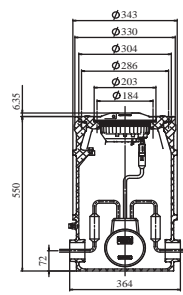
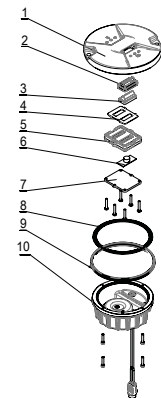


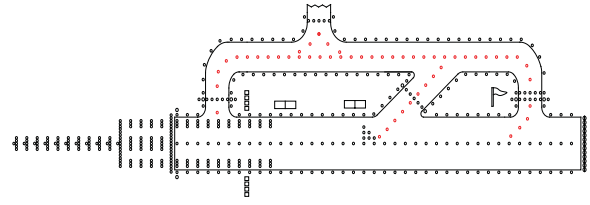
Fig 3. On 12'' deep base w/ 12''/8'' adapter ring

* Please find detailed information in installation manual

Structure

1. upper cover
2. prism gasket sleeve
3. prism
4. prism gasket
5. prism pressing bracket
6. LED lamp assy
7. cooling plate
8. light body gasket
9. lighting fixture gasket
10. inner cover assy

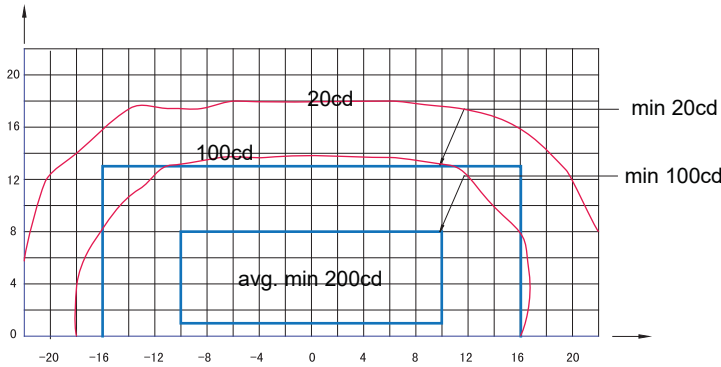




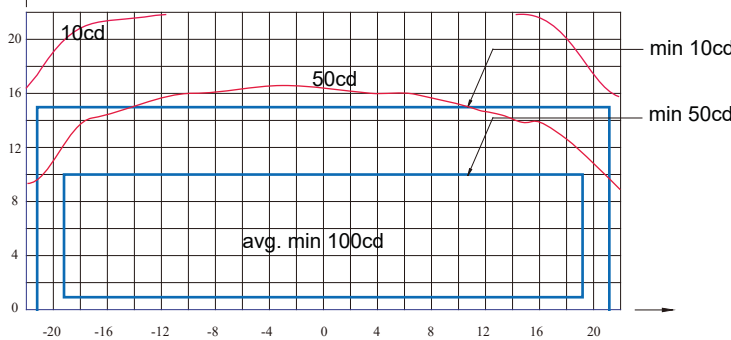
Specifications

Power: 12 VA(XX-2P) ,9 VA(XX-1P), 7 VA(XB-1P)
Power Factor: ≥0.9

Photometric Data



TCLMS-08-S-LED (Green), ICAO Figure A2-12



TCLMS-08-C-LED (Green), ICAO Figure A2-12, FAA L-852K

Application		Main Beam		Color	Required min avg. cd	Actual avg. cd
		H	V			
TCLMS-08-S-LED	ICAO Figure A2-12	±10°	1°-8°	Green	200	247
			1°-8°	Yellow	200	236
	ICAO Figure A2-13/ FAA L-852C	±3.5°	1°-8°	Green	200	285
			1°-8°	Yellow	200	267
TCLMS-08-C-LED	ICAO Figure A2-14/ FAA L-852K	±19.25° (Toe-in 15.75°)	1°-10°	Green	100	136
			1°-10°	Yellow	100	125

Packing Data

1 lights w/o base
Unit net weight: 3.4 kg
1 light w/ 8" shallow base
Unit net weight: 6.4 kg

Packing size: 210×210×130mm³
Gross weight:3.5 kg
Packing size: 240×240×180mm³
Gross weight: 6.5 kg

Spare Parts

Struc No.	Part Name	Order No.	Description
2	prism gasket sleeve	43111	roof prism gasket sleeve H15
3	prism	31152	roof prism (H19 toe-in left)
		31153	roof prism (H19 toe-in right)
		31151	roof prism (H19 straight)
4	prism gasket	43313	prism gasket(66×51) LED
5	prism pressing bracket	4321A	prism pressing bracket(79×64)
6	LED lamp assy	979231-GG	LED lamp assy 2x1P-0(GG) standard
		979221-G	LED lamp assy 1P-0(G) standard
		979221-Y	LED lamp assy 1P-0(GG) standard
		979231-GY	LED lamp assy 2x1P-0(GY) standard
		979231-YY	LED lamp assy 2x1P-0(YY) standard
8	light body gasket	41141	O-ring 137×2
9	light fixture gasket	41107	Seal belt(standard)

TCLMS-08-LED

2

2

Accessories

No.	Order No.	Description
1	SB-08	8"shallow base
2	SB-12	12"shallow base
3	DB-12	12" deep base
4	AR-12/08	12"-8" adaptor ring
5	951101	8"lamp handle
6	ITF-025-066	25-watt isolation transformer
7	REC7	moulded type secondary cable receptacle style 7