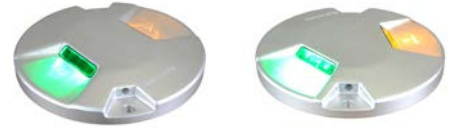


■ HTCLS-08-LED

■ High Intensity LED Taxiway Centerline Light (8-inch 6mm)



Compliance with Standards

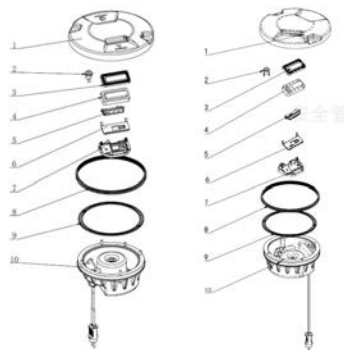
CAAC: AC-137-CA-2015-01 & 03
 SAC: GB/T 7256
 ICAO: Annex 14, Volume I
 IEC: TS 61827
 FAA: AC 150/5345-46; EB NO.67
 NATO: STANAG 3316

Features

- The LED light is featured by long working life, energy conversation, maintenance-free, which brings enormous economic benefits to customers
- Special prism structural design and manufacturing process to ensure excellent optical performance
- Strict LED color management to ensure premium color consistency
- Light distribution consistent with that of halogen lights, complying with FAA standards
- Excellent driver circuit and thermal management solution, which greatly improves the reliability and service life of light fixture
- Power factor above 0.98, which minimizes the power network disturbance
- Optional function of single lamp failure detection, which enables the light to simulate open circuit of halogen lamp when the LED light is damaged
- Specially-designed structure, protruding only 6.35mm above finish grade
- Upper cover with flat out-light surface to prevent from water buildup and ensure high luminous efficiency
- Upper cover with equal-strength design and forging craft, which has premium mechanical and barrier capacity, and shock resistance ability
- Smooth and sleek upper cover to prevent from damaging aircraft tires
- Lighting fixture made of highly conductive aluminum alloy, which ensures good heat dispersion
- Main structure made of corrosion-resistant aluminum alloy with special anodic oxidation treatment, all fasteners are made of stainless steel, suitable for harsh environment application
- High-precision parts and components machining to ensure all dimensional quality and precision
- IP68-grade, that can withstand inner pressure of up to 138kpa or water pressure generated from aircrafts' impact on the optical window
- Interchangeable, modular-designed components, applicable for all kinds of 8-inch LED in-pavement taxiway lights (6mm), which effectively runs down the inventories
- Optional arctic kit can quickly eliminate frost of the window

Structure

1. Upper cover
2. Thermostat switch
3. Prism gasket sleeve
4. Prism
5. LED lamp assy.
6. Prism gasket
7. Prism pressing bracket
8. Light bod gasket
9. Lighting fixture gasket
10. Inner cover assy.



Application/Use

As a part of the advanced ground activity guidance and control system, it can be used when high light intensity is required to maintain a certain ground operation speed under very low visibility or clear day conditions.

Ordering Information

HTCLS-08-X-LED-XX-XX-X

Type _____
 HTCLS-08=8"6mm High Intensity Taxiway Centerline Light (6.30mm protrusion above the pavement)

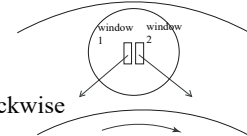
Direction _____
 S=Straight
 C=Curve

LED _____
 LED=LED light source

Beam color _____
 G-Y/G-Y=Green-Yellow/Green-Yellow
 G-Y/B=Window 1: Green-Yellow/Blank
 B/G-Y=Window 2: Blank/Green-Yellow

Plug _____
 1P=1 Plug
 2P=2 Plugs

Optional _____
 M=Single lamp fault detection function
 A=Arctic Kit



*Please provide detailed installation info while ordering, spare parts and accessories should be separately ordered.

Installation

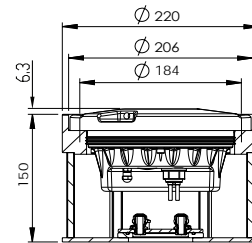


Fig 1. On 8" shallow base

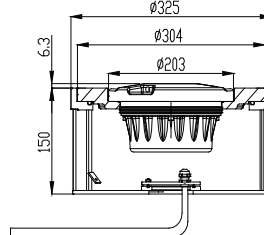


Fig 2. On 12" shallow base w/ 12"/8" adapter ring

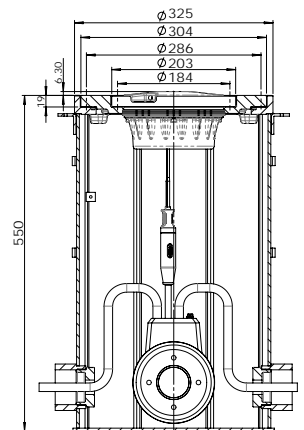
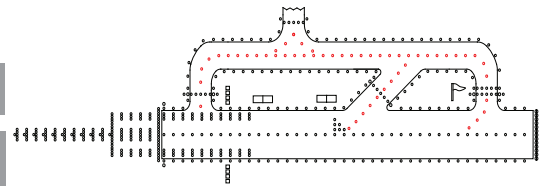


Fig 3. On 12" deep base w/ 12"/8" adapter ring

- HTCLS-08-LED
- High Intensity LED Taxiway Centerline Light (8-inch 6mm)

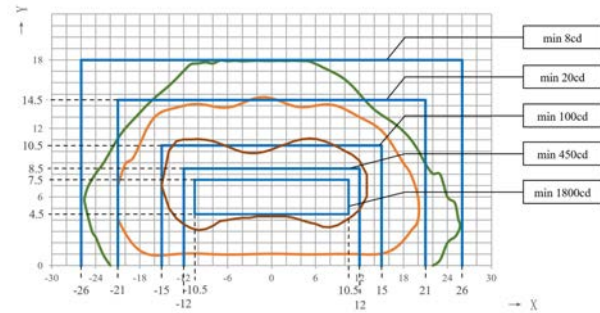


Specifications

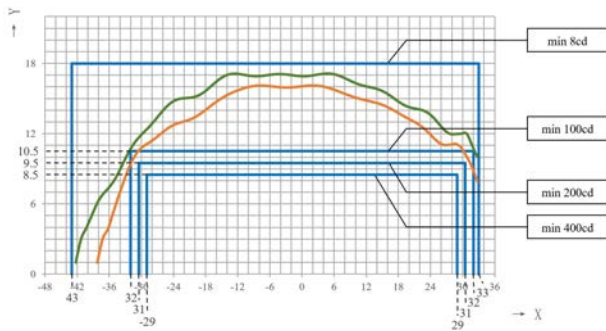
Type	Rated Power	PF
HTCLS-08-S-LED-GY-1P-M-A	36VA+30VA*	>0.98
HTCLS-08-C-LED-GY-1P-M-A	33VA+30VA*	>0.98
HTCLS-08-C-LED-YG-1P-M-A	33VA+30VA*	>0.98
HTCLS-08-S-LED-GY-2P-M-A	16VA+15VA*+20VA+15VA*	>0.98
HTCLS-08-S-LED-YY-2P-M-A	2×20VA+2×15VA*	>0.98
HTCLS-08-C-LED-YG-2P-M-A	18VA+15VA*+15VA+15VA*	>0.98
HTCLS-08-C-LED-GY-2P-M-A	15VA+15VA*+18VA+15VA*	>0.98
HTCLS-08-S-LED-GG-1P-M-A	32VA+30VA*	>0.98
HTCLS-08-S-LED-GG-2P-M-A	16VA+15VA*+16VA+15VA*	>0.98

* represents the increased power after the arctic kit is turned on

Photometric Data



HTCLS (G), ICAO Fig. A2-17



HTCLS (Y), ICAO Fig. A2-19

Application		Main Beam		Color	Required min avg. cd	Actual avg. cd
		H	V			
HTCLS-08-LED	ICAO A2-17	±10.5°	4.5°-7.5°	G	1800	2377
				Y	1800	2264
	ICAO A2-19	±29°	0°-8.5°	G	400	537
				Y	400	544

Packing Data

1 light w/o base Packing size: 210×210×130mm³
 Unit net weight: 1.8 kg Gross weight: 3.6kg

Spare Parts

Struc No.	Part Name	Order No.	Description
3	Prism gasket sleeve	43117	Prism gasket sleeve (61x28)-H6
4	Prism	31158	Prism 61x28)-H6
5	LED lamp assy	932053-HRGS-Y	LED lamp assy-HRGS-Y
6	Prism gasket	43316	Prism gasket (67x21)
7	Prism pressing bracket	43241	Prism pressing bracket (71x65)
8	Light body gasket	41141	O-ring 137x2
9	Lighting fixture gasket	41107	Seal belt (standard)

Accessories

No.	Order No.	Description
1	SB-08	8"shallow base
2	SB-12	12"shallow base
3	DB-12	12" deep base
4	AR-12/08	12"-8" adaptor ring
5	951101	8"lamp handle
6	ITF-025-066	25-watt isolation transformer
7	REC7	Moulded type secondary cable receptacle style 7

HTCLS-08-LED
2
2