

■ EOL-IA-LED(EOL-OB-LED)

■ LED Unserviceability Light



Compliance with Standards

CAAC: MH 5001
 ICAO: Annex 14, Volume 1
 ICAO: Doc 9152, Part 4
 FAA: AC 150/5345-43

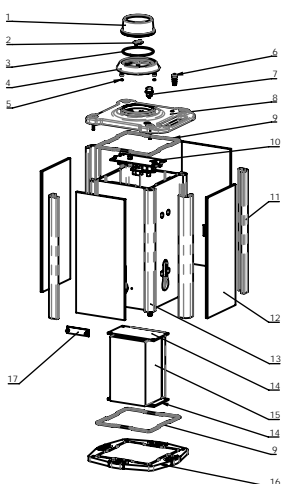
Application/Use

For night use, outline the scope of unserviceable areas

Features

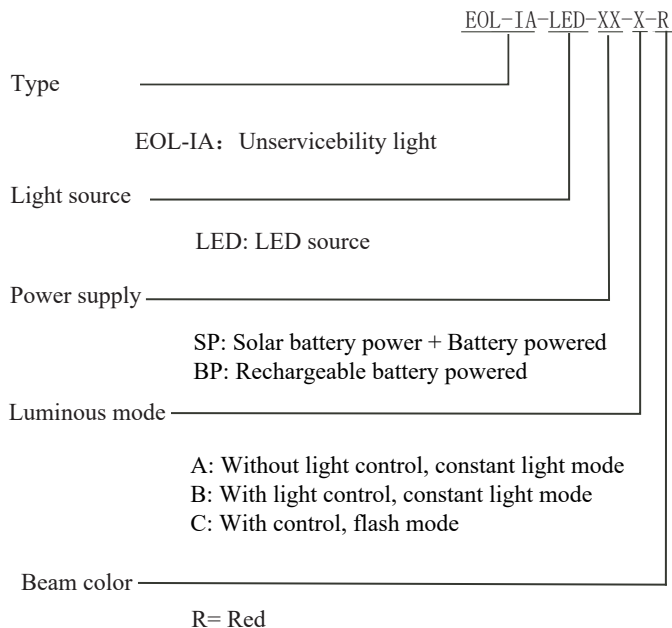
- Long life, energy saving, maintenance free and other characteristics of LED will bring huge economic benefits to customers
- Using inverted cone structure prism, high light utilization rate
- Strict LED color management ensures the consistency of light color
- The prism is made of glass, and the surface is resistant to erosion by wind and sand
- The edge of the prism adopts a unique taper design, which effectively prevents the accumulation of rain, snow, wind and sand
- Using international top brand LED, patented drive circuit, greatly improving the reliability and life of the lighting fixtures
- Choose advanced solar power panels, with high energy efficiency conversion and long life
- The power management software of the lighting fixtures can effectively play the efficiency of the solar panel
- Using industrial-grade batteries, with low self-discharge and low current charging performance
- Reserved waterproof aviation socket, convenient for external charger
- The overall structure of the lamp is compact and beautiful in appearance
- The main body of the lamp is made of aluminum alloy and the surface is treated with anti-corrosion. All fasteners are made of stainless steel, suitable for various harsh environments
- High-precision parts processing ensures the all-round quality and precision of the lighting fixture
- The overall protection level of the lamp reaches IP67

Structure



1. Prism
2. LED light source
3. Sealing ring
4. Cover bracket
5. Sealing ring
6. Valve core
7. Socket
8. Shell cover
9. Lamp body
10. Sealing ring
11. Circuit board
12. Solar panels
13. Shell frame
14. Battery pressure plate
15. Battery
16. Shell bottom cover (component)
17. Circuit board

Ordering Information



EOL-IA-LED

1
2

Installation

- * If there are special requirements, additional detailed instructions shall be provided
- * Spare parts and accessories shall be ordered separately and the order number shall be provided

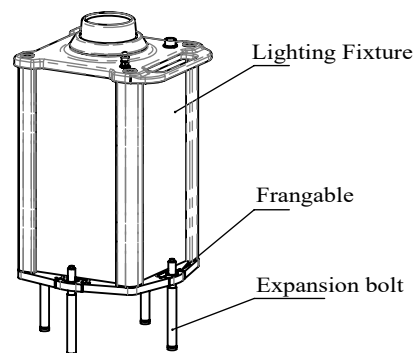


Figure 1.
 Installed directly on the ground through the base plate

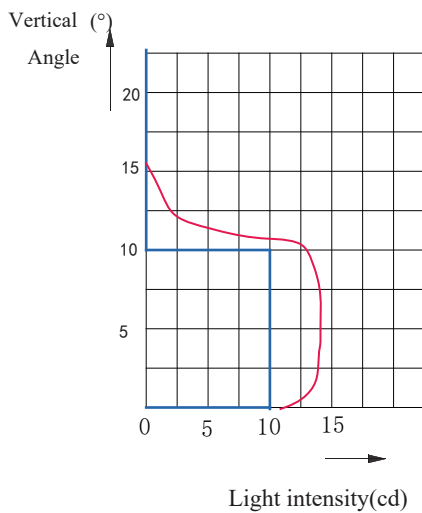
■ EOL-IA-LED(EOL-OB-LED)

■ LED Unserviceability Light

Technical Parameters

Light source: One Red LED particle
 Power supply: Solar battery + Battery powered or rechargeable battery powered
 Power consumption: $\leq 0.7VA$
 Requirement of annual average light duration: Winter > 3.1 hours/day
 Maximum non-sunlight usage time: > 80 days (brightness level 3) Long term storage time without turning on the light source: 2 years ($25\text{ }^{\circ}C \pm 5\text{ }^{\circ}C$)
 Remote control method: Infrared
 Remote control distance and angle: 1~1.5m, $0^{\circ}\sim 90^{\circ}$

Photometric Data



Unserviceability Light (red), ICAO Annex 14, Chapter 7.4.4

Application		Main beam		Color	Required Min Avg cd	Actual Avg. cd
		H	V			
Unserviceability Light	ICAO 7.4.4	360°	0~10°	Red	10	12

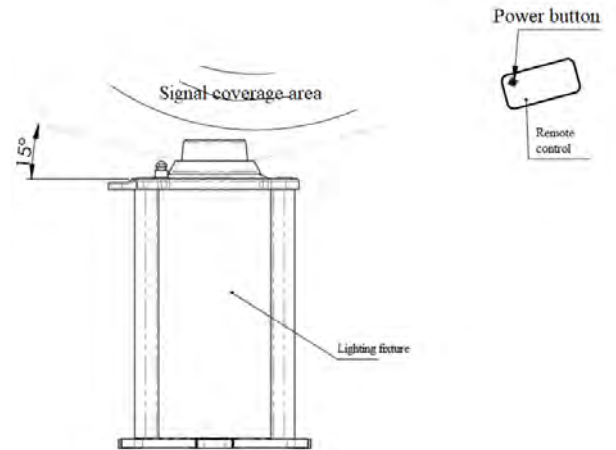
Packing Data

LED Unserviceability Light

Packing size: 330*280*260 mm³

Gross weight: 10 kg

Schematic diagram of lamp remote control



Spare Parts

No.	Accessory name	Order
1	Prism	931116
3	O style sealing ring	41114
4	Cover bracket	44515-R
7	Socket	095233
9	Lamp body sealing ring	41157
15	Battery	124216
16	Shell bottom cover	94640H
17	Circuit board	7914C

Accessory

No.	Accessory name	Order
1	Set remote control	79158
2	Standard remote control	791A4
3	Charging power supply	70805